

## 第138届广交会第一批广州酒店推荐名单

更新日期: 2025年9月2日  
Date of Update: 2 Sep 2025

序号 No.	酒店名 Hotel Name	价格有效期 Price Validity Period	广交会期间价格 (人民币) Price during Canton Fair (RMB)				穿梭巴士 Shuttle Bus	步行至地铁时间 Distance to MTR	与展馆距离 Distance between Hotel and Exhibition site	第三方平台价格对比 (人民币) Price compare with the other reservation platform (RMB)		酒店地址 Hotel Address	付款备注 Payment Notes
			第一期 Phase 1	第二期 Phase 2	第三期 Phase 3	换展期 Exchange period of exhibitions				携程 Trip.com	agoda		
1	广州花园酒店 (五星) THE GARDEN HOTEL GUANGZHOU (5 Stars)	房满即止 Subject to Availability	1330	1470	1050	680	√	淘金站 (Taojin Station) 6分钟 (mins)	11.6公里 (km)	2300	2390	广州越秀区环市东路368号 368 Huanshi Dong Lu, Yuexiu District, Guangzhou	入住前10天需提供信用卡担保, 7天内取消及未入住将会收取全额房费。 A credit card guarantee is required 10 days prior to check-in. After booking is guaranteed, cancellation within 7 days or no-show, entire reservation full payment will be charged from your credit card provided accordingly.
2	广州柏悦酒店 (五星) PARK HYATT GUANGZHOU (5 stars)	30/9/2025	2000-3950	2100-3900	2000-3400	1500-3100	√	珠江新城站 (Zhujiang New Town Station) 1分钟 (1 min)	7.2公里 (km)	3430	3343	广州天河区珠江新城华夏路16号 No.16 Huaxia Road, Tianhe District, Guangzhou, Guangdong	预订时需提供信用卡担保首晚房费, 入住前30天可取消或更改。否则, 将收取一晚房费。 The reservation requires first night room rate guarantee at the time of booking. 30 days in advance prior to check-in date for the cancellation or amendment. Otherwise, one-night room charge will be occurred as penalty.
3	广州中心皇冠假日酒店 (五星) CROWNE PLAZA GUANGZHOU CITY CENTRE (5 Stars)	30/9/2025	1530-3110	1500-3030	1230-2610	-	√	淘金站 (Taojin Station) 7分钟 (mins)	14公里 (km)	2308	2340	广州越秀区环市东路339号 No. 339 East Huanshi Road, Yuexiu District, Guangzhou	需提供信用卡担保, 预订取消及更改需视乎酒店政策。 Credit Card guarantee is required to provide. Cancellation and change of reservations are subject to hotel policies.
4	岭南东方酒店 (四星) LN DONGFANG HOTEL PAZHOU GUANGZHOU (4 Stars)	30/9/2025	1480-2688	1480-2688	1480-2688	700-1680	√	琶洲站 (PAZHOU Station) 9分钟 (mins)	2公里 (km)	2443	2270	广州海珠区新港东路1136号 No. 1136 Xingangdong Lu, Haizhu District, Guangzhou	预订时需提供信用卡担保首晚房费, 入住前30天可取消或更改。否则, 将收取一晚房费。 The reservation requires first night room rate guarantee at the time of booking. 30 days in advance prior to check-in date for the cancellation or amendment. Otherwise, one-night room charge will be occurred as penalty.
5	广州生物岛高新木莲庄酒店 (四星) THE MULIAN HOTEL OF BIO-ISLAND GUANGZHOU (4 Stars)	30/9/2025	700-1000	700-1000	600-900	500-800	√	官洲站 (Guanzhou Station) 13分钟 (mins)	9.4公里 (km)	993	978	广州海珠区国际生物岛星岛环南路106号 No.106 South Xingdao Ring Road, International Biological Island, Haizhu District, Guangzhou	需提供信用卡担保, 房间一经确认, 则不予取消, 若更改须请提前7天通知, 否则仍需扣除已担保房费作为酒店补偿金。 Credit Card guarantee is required to provide. rooms can not be cancelled or no show once room-booking accepted. First night guarantee will be charged as compensation if we do not get any request of changing the booking 7 days in advanced. One night room rate will be charged as compensation if early departure.
6	朗逸商务酒店 (三星) WARM YES HOTEL (3 Stars)	30/9/2025	698-898	698-898	698-898	-	待确定	赤岗站 (Chigang Station) 2分钟 (mins)	4.4公里 (km)	830	880	广州海珠区新港中路468号 No. 468 Xingang Middle Road, Haizhu District, Guangzhou	需提供信用卡担保, 提前七天或以上可免费取消及更改。 Credit Card guarantee is required to provide. Free cancellation or change 7 days or more in advance.

**备注:**

1. 以上酒店价格按不同日期和房型有所变动, 价格按团购和散客价格略有不同, 具体请咨询广交会驻港办事处。
2. 广州花园酒店、广州柏悦酒店上述价格不包含服务费, 需额外加收16.6%的服务费及税费。
3. 付款及担保金收取方式因酒店政策而有所不同, 具体需按预订房间数量情况而定。
4. 以上为各相关酒店提交给广交会驻香港办事处的价格, 办事处以推送为主, 不保证该价格为最低价。

**Remarks:**

1. The room rates for the above hotels are subject to change based on different dates and room types. The rates may vary slightly for tour groups and individual guests. Please consult the Canton Fair Hong Kong Office for details.
2. The quoted price for THE GARDEN HOTEL GUANGZHOU and PARK HYATT GUANGZHOU do not include service charge and are subject to an additional 16.6% service charge and tax.
3. Payment and security charges vary according to hotel policies and are subject to room availability.
4. The above room rates are provided by the respective hotels to the Canton Fair Hong Kong Office. While we present this information for your reference, we cannot guarantee they are the lowest prices available.

附件 1 广州花园酒店

THE GARDEN HOTEL GUANGZHOU



第 138 届秋交会预订优惠 138th Autumn Canton Fair Special Offer

Period (both days inclusive)	Room Type 花园客房	Special Room Rates (CNY)
14-18 Oct	Premier room	1330+16.6% with labf
19-21 Oct	Premier room	680+16.6% with labf
22-26 Oct	Premier room	1470+16.6% with labf
27-29 Oct	Premier room	680+16.6% with labf
30 Oct - 3 Nov	Premier room	1050+16.6% with labf

\*价格均为人民币定价，优惠价格视乎酒店客房具体供应情况，房满即止。The above room rates are RMB for per room night. **Room quantities are limited, discount rates are subject to availability on a first-come, first-served basis.**

\*以上房型均不可加床。Extra bed request is NOT available to Premier room.

\*附加早餐需额外加收 CNY140+16.6%服务费。Additional one daily breakfast CNY 140+16.6% surcharge and tax.

\*客人需在入住前 10 天提供信用卡以确保您的预订。Please provide credit card information to secure and guarantee your reservation 10 days prior to arrival day.

\*预订保证后，7 天内取消或未入住，将从您提供的信用卡中扣除全额预订全额费用。After booking is guaranteed, cancellation within 7 days or no-show, entire reservation full payment will be charged from your credit card provided accordingly.

\*以上优惠为广交会驻香港办事处特别价格，必需通过办事处预订方可享有此价格。Discount is available only for bookings made through the Canton Fair Hong Kong Representative Office.

### 酒店图片 Hotel Pictures



附件 2 广州柏悦酒店  
PARK HYATT GUANGZHOU

广州柏悦酒店

PARK HYATT GUANGZHOU

第 138 届秋交会预订优惠 138th Autumn Canton Fair Special Offer

		Park Room (King/Double)			River View Room (King/Double)			Park Deluxe King			Park Suite			Park Deluxe Suite		
		RATE	# OF RMS	# OF PAX	RATE	# OF RMS	# OF PAX	RATE	# OF RMS	# OF PAX	RATE	# OF RMS	# OF PAX	RATE	# OF RMS	# OF PAX
Phase I	14-Oct.	2,000			2,300			2,600			3,100			3,600		
	15-Oct.	2,350			2,650			2,950			3,450			3,950		
	16-Oct.	2,350			2,650			2,950			3,450			3,950		
	17-Oct.	2,300			2,600			2,900			3,400			3,900		
	18-Oct.	2,100			2,400			2,700			3,200			3,700		
Break	19-Oct.	1,500			1,800			2,100			2,600			3,100		
	20-Oct.	1,500			1,800			2,100			2,600			3,100		
	21-Oct.	1,500			1,800			2,100			2,600			3,100		
Phase II	22-Oct.	2,100			2,400			2,700			3,200			3,700		
	23-Oct.	2,300			2,600			2,900			3,400			3,900		
	24-Oct.	2,300			2,600			2,900			3,400			3,900		
	25-Oct.	2,300			2,600			2,900			3,400			3,900		
	26-Oct.	2,000			2,300			2,600			3,100			3,600		
Break	27-Oct.	1,500			1,800			2,100			2,600			3,100		
	28-Oct.	1,500			1,800			2,100			2,600			3,100		
	29-Oct.	1,500			1,800			2,100			2,600			3,100		
Phase III	30-Oct.	1,800			2,100			2,400			2,900			3,400		
	31-Oct.	1,800			2,100			2,400			2,900			3,400		
	1-Nov	1,800			2,100			2,400			2,900			3,400		
	2-Nov	1,800			2,100			2,400			2,900			3,400		
	3-Nov	1,500			1,800			2,100			2,600			3,100		

- ✓ The above rates are subject to 16.6% service charge and applicable government taxes.
- ✓ Daily one breakfast is included, additional breakfast charge is CNY 150 per person per meal and subject to 16.6 % service charge and applicable government taxes.
- ✓ Complimentary scheduled shuttle service to and from Canton Fair Exhibition Center.
- ✓ 10% discount for food in hotel restaurants (not including service charge and tax, not applicable to the retail product, seafood, Room service, MINI Bar, The Roof Bar and Yue Jing Xuan Chinese restaurant).
- ✓ Onsite Canton Fair Buyer Badge registration counter is included.
  
- ✓ The reservation requires first night room rate guarantee at the time of booking. 30 days in advance prior to check-in date for the cancellation or amendment. Otherwise, one-night room charge will be occurred as penalty.
- ✓ Confirmations of the reservations are subject to hotel availability.
  
- ✓ The reservation requires first night room rate guarantee at the time of booking. 30 days in advance prior to check-in date for the cancellation or amendment. Otherwise, one-night room charge will be occurred as penalty.
- ✓ Confirmations of the reservations are subject to hotel availability.

\*以上价格均为人民币定价, 优惠价格有效期至 30/9/2025。The above room rates are RMB for per room night and valid until 30 September 2025.

\*以上优惠为广交会驻香港办事处特别价格, 必需通过办事处预订方可享有此价格。Discount is available only for bookings made through the Canton Fair Hong Kong Representative Office.

### 酒店图片 Hotel Pictures



附件3 广州中心皇冠假日酒店  
CROWNE PLAZA GUANGZHOU CITY CENTRE



第138届秋交会预订优惠 138th Autumn Canton Fair Special Offer

Room Type	Supplement	Room only rate (Include service charged and TAX without Breakfast)																													
		14-Oct	15-Oct	16-Oct	17-Oct	18-Oct	19-Oct	20-Oct	21-Oct	22-Oct	23-Oct	24-Oct	25-Oct	26-Oct	27-Oct	28-Oct	29-Oct	30-Oct	31-Oct	1-Nov	2-Nov	3-Nov									
		Tue	Wed	Thu	Fri	Sat	Sun	Mon	Tue	Wed	Thu	Fri	Sat	Sun	Mon	Tue	Wed	Thu	Fri	Sat	Sun	Mon									
Superior King		1,430	1,930	1,930	1,930	1,700	Contract rate															1,280	1,430	1,430	1,330	1,130					
<b>Superior Twin</b>	<b>80</b>	1,510	2,010	2,010	2,010	1,780																1,630	1,930	1,930	1,930	1,480	1,360	1,510	1,510	1,410	1,210
Deluxe King	<b>100</b>	1,530	2,030	2,030	2,030	1,800																1,650	1,950	1,950	1,950	1,500	1,380	1,530	1,530	1,430	1,230
<b>Deluxe Twin</b>	<b>180</b>	1,610	2,110	2,110	2,110	1,880																1,730	2,030	2,030	2,030	1,580	1,460	1,610	1,610	1,510	1,310
Premium Deluxe King City View	<b>280</b>	1,710	2,210	2,210	2,210	1,980																1,830	2,130	2,130	2,130	1,680	1,560	1,710	1,710	1,610	1,410
Club Superior	<b>480</b>	1,910	2,410	2,410	2,410	2,180																2,030	2,330	2,330	2,330	1,880	1,760	1,910	1,910	1,810	1,610
Club Deluxe King	<b>580</b>	2,010	2,510	2,510	2,510	2,280																2,130	2,430	2,430	2,430	1,980	1,860	2,010	2,010	1,910	1,710
<b>Club Deluxe Twin</b>	<b>680</b>	2,110	2,610	2,610	2,610	2,380																2,230	2,530	2,530	2,530	2,080	1,960	2,110	2,110	2,010	1,810
Junior Suite City View	<b>780</b>	2,210	2,710	2,710	2,710	2,480																2,330	2,630	2,630	2,630	2,180	2,060	2,210	2,210	2,110	1,910
1 Bedroom Suite lounge access	<b>1080</b>	2,510	3,010	3,010	3,010	2,780																2,630	2,930	2,930	2,930	2,480	2,360	2,510	2,510	2,410	2,210

Room Type	Supplement	Room with Breakfast Rate (Include service charged and TAX and Daily 1 Breakfast)																													
		14-Oct	15-Oct	16-Oct	17-Oct	18-Oct	19-Oct	20-Oct	21-Oct	22-Oct	23-Oct	24-Oct	25-Oct	26-Oct	27-Oct	28-Oct	29-Oct	30-Oct	31-Oct	1-Nov	2-Nov	3-Nov									
		Tue	Wed	Thu	Fri	Sat	Sun	Mon	Tue	Wed	Thu	Fri	Sat	Sun	Mon	Tue	Wed	Thu	Fri	Sat	Sun	Mon									
Superior King		1,530	2,030	2,030	2,030	1,800	Contract rate															1,650	1,950	1,950	1,950	1,500					
<b>Superior Twin</b>	<b>80</b>	1,610	2,110	2,110	2,110	1,880																1,730	2,030	2,030	2,030	1,580	1,460	1,610	1,610	1,510	1,310
Deluxe King	<b>100</b>	1,630	2,130	2,130	2,130	1,900																1,750	2,050	2,050	2,050	1,600	1,480	1,630	1,630	1,530	1,330
<b>Deluxe Twin</b>	<b>180</b>	1,710	2,210	2,210	2,210	1,980																1,830	2,130	2,130	2,130	1,680	1,560	1,710	1,710	1,610	1,410
Premium Deluxe King City View	<b>280</b>	1,810	2,310	2,310	2,310	2,080																1,930	2,230	2,230	2,230	1,780	1,660	1,810	1,810	1,710	1,510
Club Superior	<b>480</b>	2,010	2,510	2,510	2,510	2,280																2,130	2,430	2,430	2,430	1,980	1,860	2,010	2,010	1,910	1,710
Club Deluxe King	<b>580</b>	2,110	2,610	2,610	2,610	2,380																2,230	2,530	2,530	2,530	2,080	1,960	2,110	2,110	2,010	1,810
<b>Club Deluxe Twin</b>	<b>680</b>	2,210	2,710	2,710	2,710	2,480																2,330	2,630	2,630	2,630	2,180	2,060	2,210	2,210	2,110	1,910
Junior Suite City View	<b>780</b>	2,310	2,810	2,810	2,810	2,580																2,430	2,730	2,730	2,730	2,280	2,160	2,310	2,310	2,210	2,010
1 Bedroom Suite lounge access	<b>1080</b>	2,610	3,110	3,110	3,110	2,880																2,730	3,030	3,030	3,030	2,580	2,460	2,610	2,610	2,510	2,310

\*以上价格均为人民币定价, 优惠价格有效期至 30/9/2025。The above room rates are RMB for per room night and valid until 30 September 2025.

\*以上优惠为广交会驻香港办事处特别价格, 必需通过办事处预订方可享有此价格。Discount is available only for bookings made through the Canton Fair Hong Kong Representative Office.

酒店图片 Hotel Pictures



## 附件 4 岭南东方酒店

LN DONGFANG HOTEL PAZHOU GUANGZHOU

第 138 届秋交会预订优惠 138th Autumn Canton Fair Special Offer

房间类型	10月14日-18日	10月19日-21日	10月22日-26日	10月27日-29日	10月30日-11月03日
Room Type	14-18 October	19-21 October	22-26 October	27-29 October	30 October-03 Nov
豪华大床房 Deluxe King Bed Room	¥ 1480 元/间/晚 ¥ 1480/room/night	700元/间/晚 ¥ 700/room/night	¥ 1480 元/间/晚 ¥ 1480/room/night	¥ 700 元/间/晚 ¥ 700/room/night	¥ 1480 元/间/晚 ¥ 1480/room/night
商务大床房 Business King Bed Room	¥ 1580 元/间/晚 ¥ 1580/room/night	¥ 750 元/间/晚 ¥ 750/room/night	¥ 1580 元/间/晚 ¥ 1580/room/night	¥ 750 元/间/晚 ¥ 750/room/night	¥ 1580 元/间/晚 ¥ 1580/room/night
江景大床房 River View King Bed Room	¥ 1680 元/间/晚 ¥ 1680/room/night	¥ 800 元/间/晚 ¥ 800/room/night	¥ 1680 元/间/晚 ¥ 1680/room/night	¥ 800 元/间/晚 ¥ 800/room/night	¥ 1680 元/间/晚 ¥ 1680/room/night
生态园景双床房 Garden View Twin Bed Room	¥ 1680 元/间/晚 ¥ 1680/room/night	¥ 800 元/间/晚 ¥ 800/room/night	¥ 1680 元/间/晚 ¥ 1680/room/night	¥ 800 元/间/晚 ¥ 800/room/night	¥ 1680 元/间/晚 ¥ 1680/room/night
商务套房 Business Suite King Size Bed	¥ 2388 元/间/晚 ¥ 2388/room/night	¥ 1380 元/间/晚 ¥ 1380/room/night	¥ 2388 元/间/晚 ¥ 2388/room/night	¥ 1380 元/间/晚 ¥ 1380/room/night	¥ 2388 元/间/晚 ¥ 2388/room/night
270° 江景套房 270° River View Suite King Size Bed	¥ 2688 元/间/晚 ¥ 2688/room/night	¥ 1680 元/间/晚 ¥ 1680/room/night	¥ 2688 元/间/晚 ¥ 2688/room/night	¥ 1680 元/间/晚 ¥ 1680/room/night	¥ 2688 元/间/晚 ¥ 2688/room/night

\*以上价格均为人民币定价, 优惠价格有效期至 30/9/2025。The above room rates are RMB for per room night and valid until 30 September 2025.

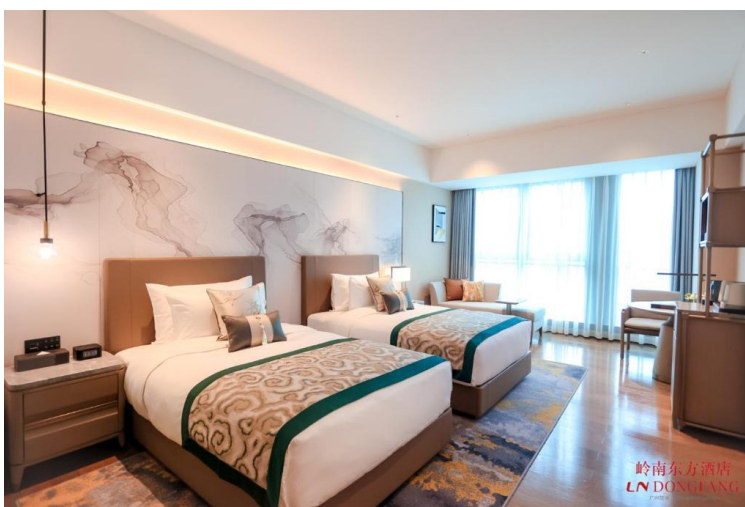
\*以上优惠为广交会驻香港办事处特别价格, 必需通过办事处预订方可享有此价格。Discount is available only for bookings made through the Canton Fair Hong Kong Representative Office.

\*以上价格大床房每房每晚包含一份西式自助早餐, 双床房包含两份西式自助早餐。The room rate includes daily Western-style buffet breakfast (one for Queen/King rooms, two for Twin rooms).

\*预订时需提供信用卡担保首晚房费, 入住前 30 天可取消或更改。否则, 将收取一晚房费。The reservation requires first night room rate guarantee at the time of booking. 30 days in advance prior to check-in date for the cancellation or amendment. Otherwise, one-night room charge will be

occurred as penalty.

### 酒店图片 Hotel Pictures



附件 5 广州生物岛高新木莲庄酒店

THE MULIAN HOTEL OF BIO-ISLAND GUANGZHOU



第 138 届秋交会预订优惠 138th Autumn Canton Fair Special Offer

一、第 138 届广交会价格 Price of the 138th Canton Fair

(元/间夜 CNY/Per Room/Per Night)

项目明细 Item Details	时段 Period	第一、二期 Phase 1&2	第三期 Phase 3	休馆期 Closed period
房间类型 Room Type	日期 Date 门市价 Rack Rate	14-18/Oct. 22-26/Oct.	30/Oct.-04/Nov.	19-21/Oct. 27-29/Oct.
高级客房 (大床) Superior King Bed Room	1500	700	600	500
高级客房 (双床) Superior Twin Bed Room	1500	750	650	550
豪华客房 (大床) Deluxe King Bed Room	1700	750	650	600
豪华客房 (双床) Deluxe Twin Bed Room	1700	800	700	650
行政客房 (大床) Executive King Bed Room	1980	800	700	650
双卧室家庭房 Family Room	2400	900	800	700
豪华套房 Deluxe Suite Room	2600	950	850	750
江景套房 River view suite Room	2800	1000	900	800
加床 Extra Bed	800	400	300	300

## 二、预订政策 Reservation Policy

- 1、广交会期间房间预订须提供首晚房费进行担保（信用卡、汇款、现金等方式），房间一经确认，则不予取消，若需更改须请提前7天通知，否则仍需扣除已担保房费作为酒店补偿金。（客人入住后若提前离店，则须支付等同一晚房费金额作为酒店补偿金。

During the fair, first night guarantee is requested for room-booking(credit card, remittance, cash etc.), rooms can not be cancelled or no show once room-booking accepted. First night guarantee will be charged as compensation if we do not get any request of changing the booking 7 days in advanced. One night room rate will be charged as compensation if early departure.

- 2、房价大床房包含1份中西式自助早餐，双床房包含2份中西式自助早餐（按实际登记人数，最多贰份），加床不含早。

The King Room Rate includes 1 buffet breakfast.The Twin Room Rate includes 2 buffet breakfasts (based on actual number of registered guests, maximum TWO).Extra bed does not include breakfast.

- 3、广交会期间如需加订早餐按人民币88元/位，换展期期间如需加订早餐则按人民币68元/位。

If you need to order additional breakfast during the fair, it will be charge CNY88 /per. If you need to order additional breakfast Non-exhibition period, it will be charge CNY68 /per.

- 4、以上房价均为人民币报价，且包含15%服务费及6%税费，并可免费乘坐酒店往返于琶洲展馆穿梭巴士服务。

The room rate is quoted in CNY, inclusive of 15% service charge and 6% tax, and provides shuttle bus round-trip between Hotel and Pazhou Exhibition Hall for free.

\*以上价格均为人民币定价，优惠价格有效期至30/9/2025。The above room rates are RMB for per room night and valid until 30 September 2025.

\*以上早鸟优惠为广交会驻香港办事处特别价格，必需通过办事处预订方可享有此价格。

The early bird discount is available only for bookings made through the Canton Fair Hong Kong Representative Office.

酒店图片 Hotel Picture



附件 6 朗逸商务酒店  
WARM YES HOTEL



第 138 届秋交会预订优惠 138th Autumn Canton Fair Special Offer

房型 Room Type	第 1-3 期 Phase1-3 (14/10-19/10、22/10-27/10、30/10-4/11)	休展期 Exchange period of exhibition
朗逸大床房 Lamyi King Room	698	338
商务双床房 Business Twin Room	738	368
雅致大床房 Elegant King Room	778	368
朗逸双床房 Lamyi Twin Room	778	368
影音大床房 Audiovisual King Room	818	388
景观双床房 Twin Room of View	818	418
景观大床房 King Room of View	858	418
雅致双床房 Elegant Twin Room	898	448

\*以上价格均为人民币定价，优惠价格有效期至 30/9/2025。The above room rates are RMB for per room night and valid until 30 September 2025.

\*以上优惠为广交会驻香港办事处特别价格，必需通过办事处预订方可享有此价格。Discount is available only for bookings made through the Canton Fair Hong Kong Representative Office.

\*以上价格均不包含早餐，早餐需额外加 RMB 30 元一位。The above prices do not include breakfast, breakfast will be charged an extra RMB 30 per person.

\*展会期间提供免费穿梭巴士接送酒店至展馆。 During the exhibition free shuttle bus transfer hotel to the exhibition hall.

\*房间一经确认需提供首晚房费作为担保；取消或更改需提前七天以书面通知酒店，否则将收取一晚房费作为空房补偿。Once the room is confirmed, the first night room fee should be provided as a guarantee; Cancellations or changes must be notified to hotel in writing seven days in advance, otherwise, hotel will charge one night as compensation for empty room.

### 酒店图片 Hotel Pictures

